
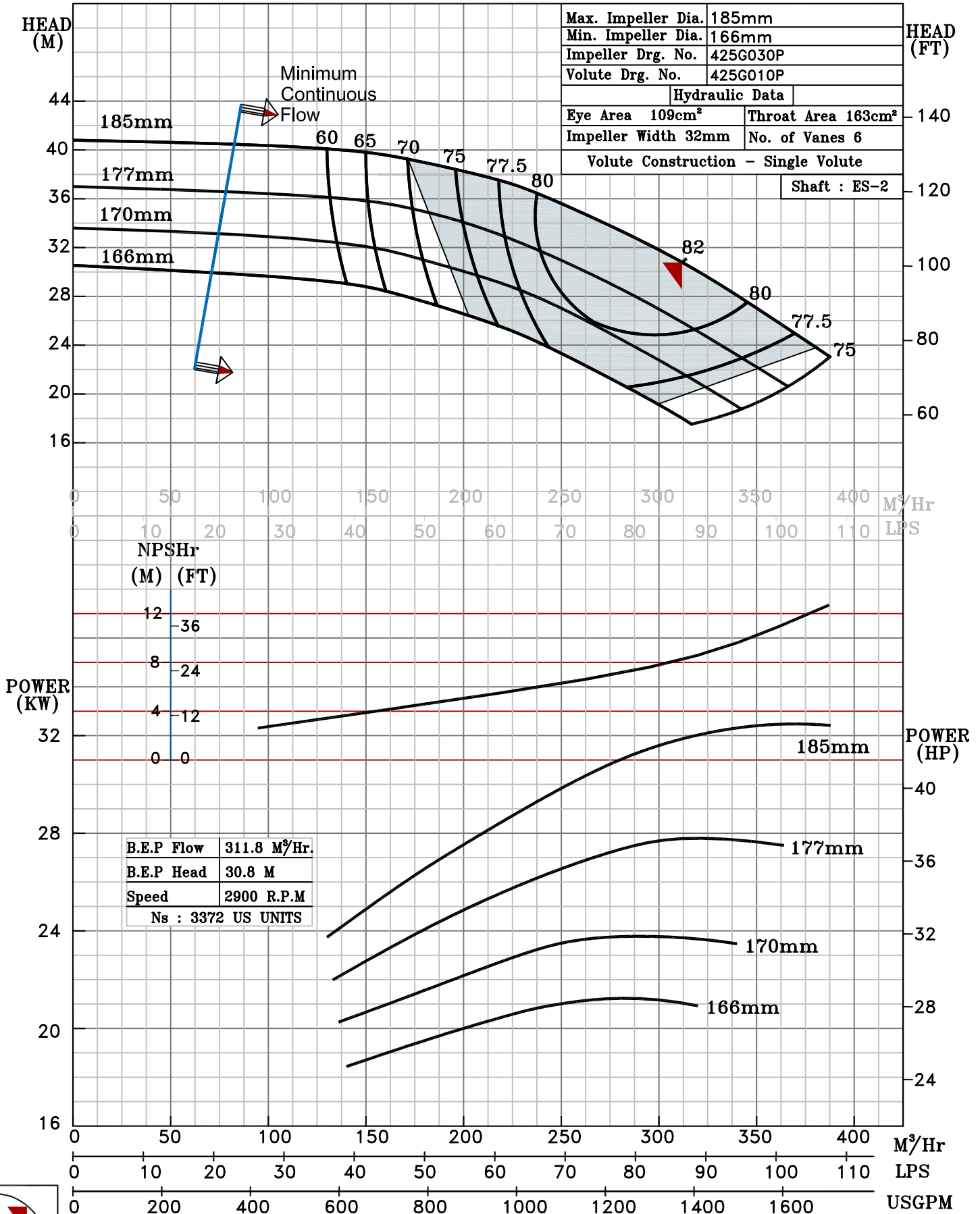


NOTE- PERFORMANCE AS PER ISO 9906 GRADE-2B

PERFORMANCE CURVE OF ES 100-160 @2900 R.P.M		ES 100-160/X/402552	
 <b>PUMPSENSE</b> ISO 2858 ES RANGE	MODEL - ES 100-160	WORKING PRESS.	16 bar
	SIZE 125x100-185	TEST PRESS.	24 bar
	TYPE - END SUCTION BACK PULL OUT		SPEED 2900 rpm

SHADED REGION ON THE H-Q CURVE REPRESENTS OPTIMUM SELECTION ZONE  
 PUMP PERFORMANCE CHARACTERISTICS COMPUTED BASED ON CLEAN COLD WATER S.G 1.0



2900 RPM